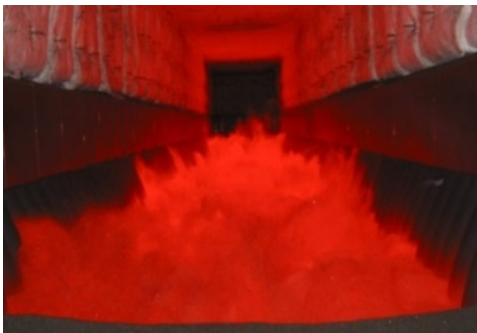
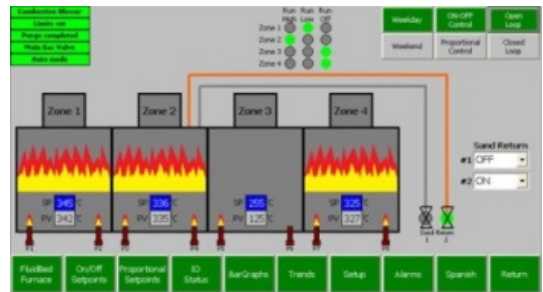


Advantages of QED's FastHeat™ Fluidbed



QED continues to lead the industry in design and dependability with our FastHeat™ Fluidbed Furnace. Built to last with a rugged structural frame and heavy gage retort walls, these furnaces offer rapid heat-transfer to the wires in a low maintenance package. They incorporate the latest in fluidization and combustion technologies and benefit from a 20 year continuous improvement program. Our wide customer base, spanning six continents, is testament to their popularity and positive reputation.

- ✚ **Advanced PLC Control** – offers improved thermal efficiency with optimized fluidization rates and pressure feedback controlled air.
- ✚ **Mass Flow Gas** – gives precision air-gas ratio control and higher efficiency.
- ✚ **Improved Combustion with “Gas Injection”** The fuel is injected into the burner piping directly under the bed eliminating “flashback” issues.



- ✚ **Labyrinth Seal Threading Slot** - reduces heat loss, lowers maintenance costs and provides fast wire threading.
- ✚ **Excellent Sand Return** – Our sand return system uses specially designed eductors, vortex elbows and hood mounted diffusion boxes. This highly effective, low maintenance system is a result of decades of continuous improvement.

- ✚ **Visual flow indication** – We provide a flow indication board that gives a continuous readout of both air and gas flows to each zone. The operators can tell at a glance the fluidizing rates of the furnace.
- ✚ **Pneumatic End Doors** – To permit a quick full view visual check of the inside of the furnace.



Our furnaces are custom built and range in production from 1.5 to over 8 tons/h with wire speeds from DV= 120 to over DV=250. With a quick response time and wide range of stable operating temperatures, our furnaces can be successfully used in many wire heat-treating applications. Each QED FastHeat™ Fluidbed is custom designed to suit your special requirements.



- **High Wire Speeds and Production**
- **Simple Operation & Low Maintenance**
- **Networked PLC Control with Remote Monitoring**
- **Quick Start-up and Shut-down**
- **Environmentally Friendly**
- **Reliable Performance**

- **High Thermal Efficiency at Full Production**
- **Mass-flow Air/Gas Ratio Control**
- **Full Combustion Safeties Designed for Local Codes**
- **Latest Generation PLC with SCADA Capabilities**
- **Excellent Sand Return System**

Decades of design refinements have advanced the QED Fluidbed to the definitive industry leader. From our low maintenance designs (pilot cooling, wire protection devices, sand return components) to energy efficiency (proportional mass-flow control, pressure feedback, thermal insulation) to ease of operation (visual flow indication, pneumatic end doors, simplified threading) and process management (networked PLC, data logging) the QED fluidbed is the best in the industry.

