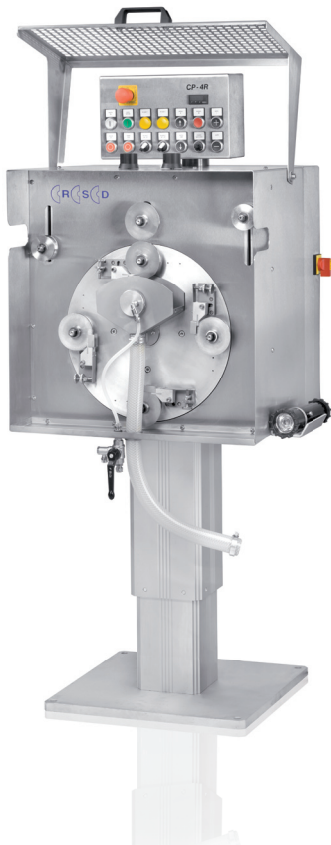
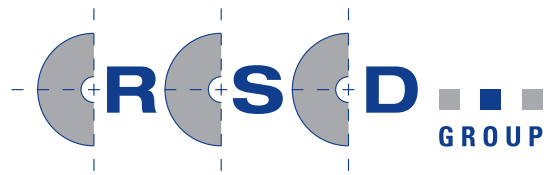
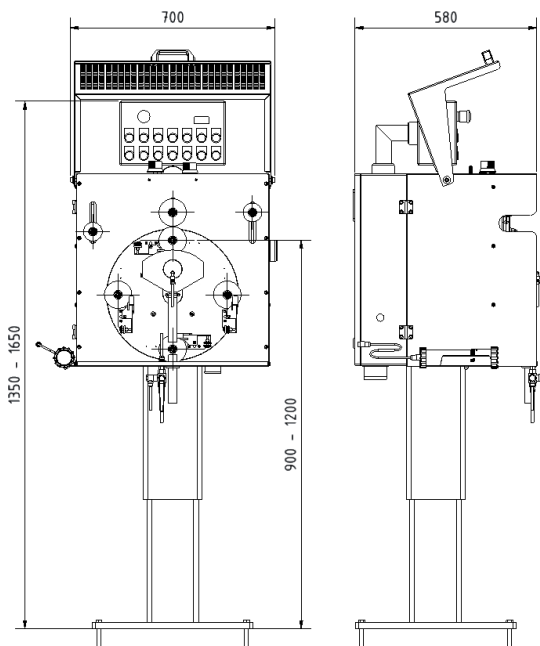


## High-Speed-Printer



Type of machine	CP4R-81
Type of printing	direct printing
Drive	electronically controlled drive
Automatical synchronisation with line	yes
Number of printing stations	4
Printing direction	l. → r. / r. → l.
Maximum printing diameter	Ø 0,8 mm - 25 mm
Lift column electronically adjustable	yes
Print height adjustment	900 mm - 1200 mm
Maximum printing speed	1500 m/min
Printing wheel diameter	Ø 86 mm
Mounting hole diameter	12,7 mm
Ink reservoir	0,5 - 2 L
Suitable for plane printing wheels	yes
Suitable for concave printing wheels	yes
Suitable for embossing/indenting wheels	yes
Printing simulator	yes
Inline-stroboskop lamp(synchronized)	optional
Viscosity control system	optional
Viscosity unit for double ink pump system	optional
Second ink pump unit for quick ink change	optional
Movable machine	optional
Power supply	400 V, 50 Hz, 3 Ph
Weight	approx. 170 kg



The CP 4R is an automatic cable printing machine with electronically controlled printwheel drive and automatic printwheel changer. This type of drive allows printing at speeds of up to 1500 m/min. The CP 4R is particularly suitable for quick changes of text or numeric printing. A synchronized inline-stroboscope provides an easy checking of the printing process and a high-speed scraper system comes up to the printing speed. High-quality corrosion-resistant materials are used for the manufacturing of this machine. Easy modifications according to the customer specification can be realized.

**RSD TECHNIK GmbH**

Walter-Wetzel-Straße 2 • 79588 Efringen-Kirchen - Germany • Phone +49 7628 802 0  
 Fax +49 7628 802 80 Mail: sales@rsdtechnik.de • Web: www.rsdtechnik.com